


Monitoring the Canadian Grain Handling and Transportation System

Getting our Grain to Market


WCWGA Convention 2006
Saskatoon, SK
March 16, 2006




Topics

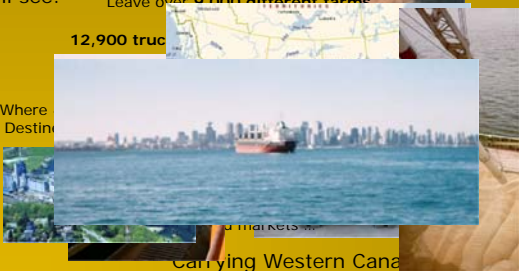
- Numbers
- Dashboard
- The Supply Chain
- Issues
- Summary

March 16, 2006 WCWGA 2006 Conference



The GHTS on an Average Week,

Will see: Leave over **8,000 different farms**
12,900 trucks

Where Destination: **Carrying Western Canada**



March 16, 2006 WCWGA 2006 Conference


Numbers

- 20.8 million tonnes moved, 18.9 mmt loaded to bulk vessels
- Approx. 672,000 truckloads delivering grain
- 356 elevators at 282 delivery points
- 18,763.7 miles of track
- 218,447 cars unloaded at ports
- 695 vessels loaded with an average of 27,250 tonnes per load
- Value of WC export movement = \$11 B ++
 – Cost of Transportation and Logistics = \$2.7 B ++

March 16, 2006 WCWGA 2006 Conference


Country Elevators - 1999

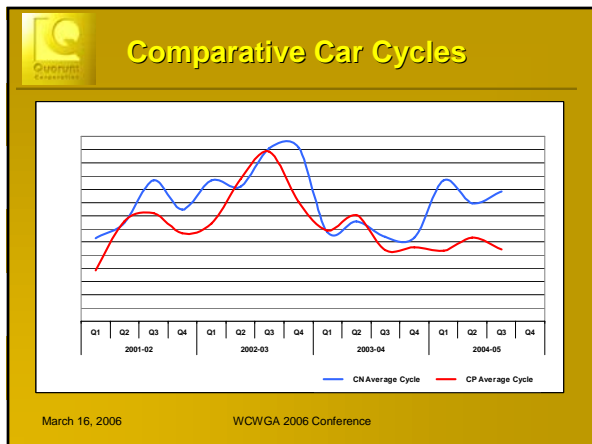
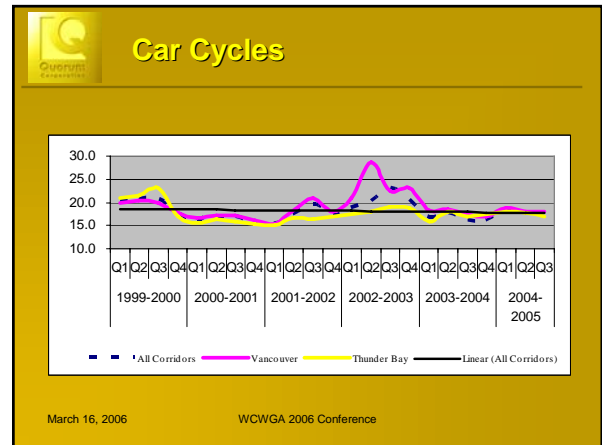
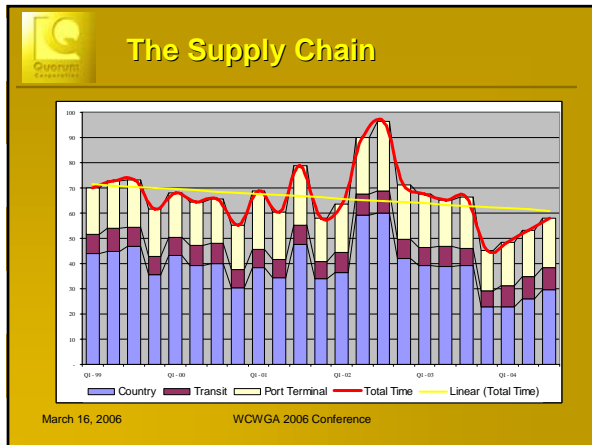
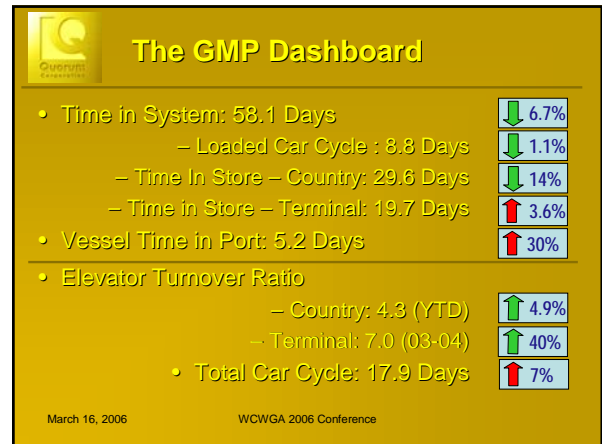
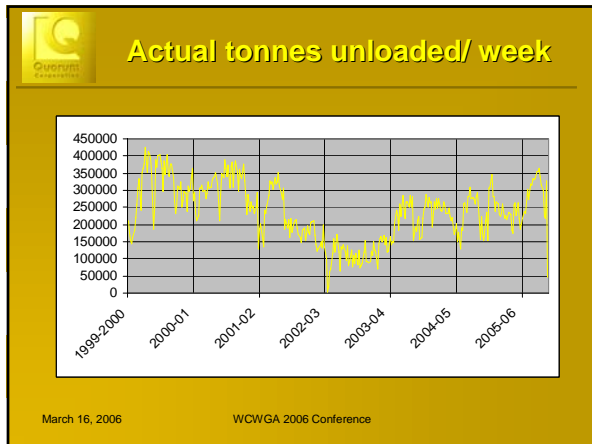


March 16, 2006 WCWGA 2006 Conference


Country Elevators - 2005



March 16, 2006 WCWGA 2006 Conference



- ### Issues and Challenges
- Producers
 - Grain Companies
 - Railways
 - Port Terminals
 - General
- March 16, 2006 WCWGA 2006 Conference

Producers

- Optimizing margins through managing costs
- Avg. increase over GMP has been 1.2%/ year
- Export Basis has held, but up this year
- Longer truck hauls
- Delivery options and alternatives

	03-04	04-05*	Var.
Freight	33.32	33.70	+1.1%
Truck	5.94	6.55	+10.3%
Elev.**	15.92	16.20	+1.8%
CWB	7.79	6.75	-13.4%
Prem.	(7.39)	(5.17)	-30%
Total	\$55.51	\$58.03	+4.5%

* estimated
** elevation, cleaning & CGO fees

March 16, 2006 WCWGA 2006 Conference

Grain Companies

- Resurgence to the black
- Continued rationalization
- Challenges in the logistics of movement continue
 - Different approaches for different sized companies

March 16, 2006 WCWGA 2006 Conference

Railways

- Both Class 1's had exceptional financial performance
- Capacity issues continued to challenge
- CN/CP Co Production

March 16, 2006 WCWGA 2006 Conference

Revenue Cap Definitions

- Does provide a statutory limit on amount of revenue railway can earn
- A dynamic revenue regulating mechanism
- Defined by formula
- Allows for adjustments of add. operating costs and inflation
- Does not incorporate static revenue limits
- Does not penalize railways for:
 - handling more volume
 - additional costs arising from inflation
- Does not include movements to Eastern or US destinations

March 16, 2006 WCWGA 2006 Conference

Single Car Rate Adjustments

March 16, 2006 WCWGA 2006 Conference

Revenue Cap Performance

	BASE	2000-01	2001-02	2002-03	2003-04	2004-05
Total Tonnes Moved	26,331	29,235	22,077	16,380	24,526	24,317
Average Length of Haul (miles)	967	926	896	869	890	900
Volume-related Composite Price Index		1.0000	1.0352	1.0442	1.0195	1.0108
REVENUE CAP						
Allowable Revenue (\$000)	710,900	760,785	580,262	425,542	631,571	629,250
Allowable Revenue per tonne (dollars)	27.00	26.02	26.28	25.98	25.75	25.88
Allowable Revenue per tonne-mile (cents)	2.79	2.81	2.93	2.99	2.89	2.86
REVENUE CAP COMPLIANCE						
Reported Revenue (\$000)		755,027	558,031	401,682	630,703	628,800
Reported Revenue Cap Differential (\$000)		5,758	22,231	23,860	868	394
Actual Revenue per tonne (dollars)		25.83	25.28	24.52	25.72	25.87
Actual Revenue per tonne-mile (cents)		2.79	2.82	2.82	2.89	2.86

March 16, 2006 WCWGA 2006 Conference

Revenue Cap Performance

<u>Crop Year 2004-05 Results</u>	CN	CP
Allowable Revenue (\$000)	305,670	323,582
Reported Revenue (\$000)	305,789	323,069
Reported Rev. Cap Diff. (\$000)	(119)	513
% Variance	-0.04%	0.16%

- Exceptional management of rates and costs to be within 2/10ths of a percent
- What do the past two years results really indicate?

March 16, 2006 WCWGA 2006 Conference

Ports and Terminals

- Vancouver Labour Issues
- AU UGG Terminal
- SWP/ JRI Joint Venture
- VPA Capacity Challenges
 - Dwell , loading and multiple berthings
 - General Port Capacity
 - Pacific Gateway Initiative
- Prince Rupert
 - Container Terminal
 - PRG increased volumes

March 16, 2006 WCWGA 2006 Conference

Challenges going forward

- Access to transportation capacity
 - Rail
 - Bulk Vessel
 - Container
- Inevitable changes that will come from evolving energy markets
 - Wheat for fuel, ethanol
 - Canola for biodiesel
 - DDGS – local feed demand
- Necessity for Supply Chain process improvements and coordination

March 16, 2006 WCWGA 2006 Conference

Actual tonnes unloaded/ week

March 16, 2006 WCWGA 2006 Conference

Actual Weekly Unloads

March 16, 2006 WCWGA 2006 Conference

Trends in the Noise

Avg. Deviation **17%** **11 – 16%**

Differential from 10 week mean rolling average for GMP period (less 2001-02 & 2002-03 account drought)

March 16, 2006 WCWGA 2006 Conference



Summary

- Performance and trends starting to reveal modest improvement
- Looking for the next series of changes
 - Crop mix, modal shifts, market demand changes
 - Container Study ongoing
- Annual Report likely to be delivered in April

March 16, 2006

WCWGA 2006 Conference



Monitoring the Canadian
Grain Handling and
Transportation System



Thank You